



**WIORA**  
**West Coast Championship**  
**18<sup>th</sup> - 21<sup>st</sup> June 2025**  
**&**  
**Ruffian National Championships**  
**20<sup>th</sup> - 22<sup>nd</sup> June 2025**  
**Mayo Sailing Club**

# **Sailing Instructions (SIs)**

The Organising Authority (OA) is Mayo Sailing Club (MSC) in conjunction with the West of Ireland Offshore Racing Association (WIORA) and the Irish Ruffian Association

*The notation '[DP]' in a rule in the SIs means that the penalty for a breach of that rule may, at the discretion of the protest committee, be less than disqualification.*

## **1.0 RULES**

1.1 The regatta will be governed by the rules as defined in The Racing Rules of Sailing, the rules of IRC, the rules of the Irish Sailing ECHO Performance Handicap System, the constitution of WIORA and Class Association Rules where applicable.

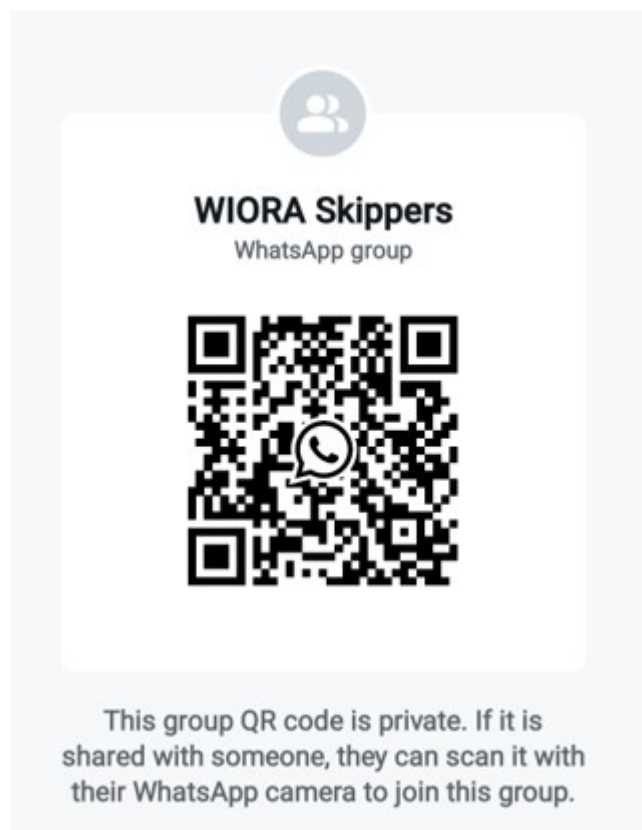
1.2 [DP] Except for the Ruffian 23 class, boats shall display their class flag or coloured ribbon from their backstay while racing. Any boat failing to comply may be scored DNF without a hearing. This changes RRS 35 and A5.

## **2.0 CHANGES TO SAILING INSTRUCTIONS**

2.1 Any change to the sailing instructions will be posted before 1000 hrs on the day it will take effect, except that any change to the schedule of races will be posted by 2000 hrs on the day before it will take effect.

### **3.0 COMMUNICATIONS WITH COMPETITORS**

3.1 Notices to competitors will be posted on the event WhatsApp Group.



If you cannot scan this code, go to <https://chat.whatsapp.com/Htin9ihLo4U20FNxvjddXz>

3.2 The race committee may at any time communicate with competitors via VHF channel 12. Failure to transmit or receive such broadcasts or errors therein, shall not be grounds for redress by a boat. This changes RRS 61.1(a).

3.3 See SI 17.1 for link to Results queries.

3.4 Except in an emergency, a boat shall neither make nor receive communications not available to all boats. This restriction also applies to Mobile Telephones.

### **4.0 CODE OF CONDUCT**

4.1 Competitors and support persons shall comply with all reasonable requests from race officials.

## 5.0 SIGNALS MADE ASHORE

5.1 Signals made ashore will be posted on the event WhatsApp group and may be repeated by display on the flagstaff in front of Mayo Sailing Club. If such a change does not relate to all classes, the relevant class flag(s) will be displayed in conjunction with the Code Flag L.

5.2 When flag AP is posted or displayed ashore “1 minute” is replaced with “not less than one hour” in the race signal AP.

## 6.0 SCHEDULE OF RACES

**6.1 WIORA:** Seven (7) races are scheduled.

<b>Day/Date</b>	<b>Time</b>	<b>No. Races</b>	<b>Activity</b>
Wed 18 <sup>th</sup> June	12:00	2	1 <sup>st</sup> Race Warning Signal. All Classes
Thurs 19 <sup>th</sup> June	11:00	Coastal Race	Warning Signal. All Classes
Fri 20 <sup>th</sup> June	11:00	2	1 <sup>st</sup> Race Warning Signal. All Classes
Sat 21 <sup>st</sup> June	11:00	2	1 <sup>st</sup> Race Warning Signal. All Classes

Races for Ruffians in the WIORA event on Friday & Saturday are also part of the Ruffian National Championship event.

### 6.2 Ruffian 23

Seven (7) races are scheduled. Races on Friday and Saturday are part of the WIORA event for those Ruffians entered in WIORA.

<b>Day/Date</b>	<b>Time</b>	<b>No. Races</b>
Fri 20 <sup>th</sup> June	11:00	Up to 3 races
Sat 21 <sup>st</sup> June	11:00	Up to 3 races
Sun 22 <sup>nd</sup> June	11:00	As many races as are required to complete the series to a maximum of 3.

6.3 After the first race the warning signal for subsequent races will be made as soon as is practicable.

6.4 The decision to sail more than the scheduled number of races per day lies at the discretion of the Race Officer. If code flag “E” is displayed at the finish of the last scheduled race of the day, this indicates there will be an extra race sailed that day. If code flag “E” applies to Ruffians only, it will be flown over the Ruffian Class Flag.

## 7.0 CLASS FLAGS

7.1 The Class Flags/Ribbons will be:

- Class 1                      Numeral Pennant 1/Red Ribbon
- Class 2                      Numeral Pennant 2/Blue Ribbon
- White Sails                 Numeral Pennant 3/White Ribbon
- Ruffian 23                 Code Flag Q (Ribbons not required)

7.2 Entries will be divided into classes which will not be decided until afterclosing date for entries. The composition of the classes will be determined at the sole discretion of the Organising Authority paying due regard for the need for a reasonable number of boats in each class along with the requirement to have as close a spread of TCC's as possible in each class. This will not be grounds for redress. This changes rule 61.1(a).

## 8.0 RACING AREA

8.1 Race area will be west of Inishgort Lighthouse. Boats should allow 30 to 40 minutes to reach the starting area.

## 9.0 COURSES

9.1 The courses will be laid as per Addendum 1 or may be fixed mark type courses. In addition, there will be one coastal race where marine navigation marks and other laid marks may be used. The type of course to be used may be displayed on the Event Noticeboard each day and broadcast on VHF Channel 12 prior to the first warning signal for each race.

Courses for WIORA will be Olympic, Windward/Leeward, Triangular, Round the cans and a Coastal race.

Ruffians National Championships will sail Olympic or Windward/Leeward courses. In addition, the race officer at their sole discretion, may use alternative courses. The relevant course flag will be displayed and competitors will be advised via VHF.

9.2 No later than the warning signal, the Race Committee will display the course flag. The number of rounds will be displayed on a board on the committee vessel.

Course Type	Flag
Olympic	Code Flag O
Windward/Leeward	Code Flag W
Triangles	Code Flag T
Round the Cans	Code Flag R

9.3 No later than the warning signal, the Race Committee may announce the approximate compass bearing to Mark 1.

## **10.0 MARKS**

10.1 The laid racing marks will be red pillar inflatable buoys. The Starting and Finishing marks may be a red pillar inflatable buoy or a dan buoy.

10.2 Fix mark courses will use Mayo Sailing Club marks as detailed in Addendum 2.

10.3 A race committee vessel signalling a change of course is a mark as provided in SI 15.2.

## **11.0 DANGERS TO NAVIGATION**

11.1 Boats are strongly advised to keep clear of Dillisk Rocks, marked by a green channel mark and a perch and Cloughcormack Shoal, marked by a West Cardinal mark. Boats are also advised to keep clear of the shoal area east of Roonagh Point.

11.2 Boats should keep a sharp lookout for numerous lobster pots and their lines in Clew Bay.

## **12.0 THE START**

12.1 Races will be started in accordance with RRS 26.

12.2 The starting line will be between a red and white pole on a Race Committee vessel displaying an orange flag and the Outer Distance Mark at the port end of the line. This changes Race Signals.

12.3 The race committee may broadcast Individual Recall OCS sail numbers no earlier than one minute after the starting signal, on VHF channel 12. Failure to make or receive such broadcasts, or the sequence of such broadcasts, shall not be grounds for redress by a boat. This changes rule 61.1(a).

12.4 Starting Sequence

12.4(a) The start sequence will be:

Class 1  
Class 2 & White Sails  
Ruffians

The Race Committee may alter the above sequence by VHF broadcast.

12.4(b) The warning signal for Classes other than Class 1 will be made at or after the starting signal of the previous class.

12.4(c) In the event of a general recall, the recalled Class shall restart before any remaining classes.

12.5 When the Race Committee determines that a boat has not complied with RRS 30.1, 30.3, 30.4 or SI 12.6, the Race Committee may broadcast the boat's sail number on the designated VHF channel, no earlier than one minute after the starting signal.

12.6 When an inner limit mark (ILM) is laid, approximately on the starting line, it is a starting mark that shall be left on the same side as is required for the race committee boat. A boat that passes between the committee boat and the ILM shall sail across an extension of the starting line to the pre-start side before starting. A boat that fails to do so will be scored Did Not Start by the race committee without a hearing, this changes RRS A5.1.

12.7 Failure to broadcast, or errors in the broadcast, under SI 12.3, 12.5 or 12.6 will not be grounds for redress by a boat. This changes RRS 61.1(a).

12.8 A boat starting later than 10 minutes after her starting signal will be scored Did Not Start (DNS) without a hearing. This changes A4 and A5.

12.9 [DP] Boats whose warning signal has not been made shall avoid the starting area during the starting sequence for other races.

### **13.0 CHANGE OF THE NEXT LEG OF THE COURSE**

13.1 The change will be signalled in accordance with rule 33, except that Flag C will not be displayed, this changes rule 33.

13.2 Except at a gate, boats shall pass between the Race Committee vessel signalling the change of the next leg and the nearby mark, leaving the mark to port and the committee vessel to starboard.

13.3 Minor adjustments of mark positions will not be signalled by the Race Committee.

### **14.0 THE FINISH**

14.1 The finish line will be between a red and white pole on a finishing vessel displaying a Blue flag and the Finish Mark. This changes Race Signals.

14.2 For the Coastal Race, an alternative finish line may be used. This will be advised by VHF.

14.3 Except to start or finish, no boat shall pass through the finishing line, in either direction. Any boat in breach of this SI may be scored DNF without a hearing. This changes rules A4.1 and A5.

14.4 Note that a start mark for any subsequent race MAY be laid at the finish.

### **15.0 SHORTENING COURSE**

15.1 The Race Committee may shorten the course under RRS 32.

15.2 In addition to RRS 32, when a Race Committee vessel displaying Code Flag F, making repeated sound signals, is positioned adjacent to a mark or gate of the course, boats, having rounded that mark or passed through the gate, shall proceed directly to the Finish line to finish.

## **16.0 TIME LIMITS**

16.1 Boats failing to finish within 30 minutes after the first boat in each class sails the course and finishes will be scored Did Not Finish without a hearing. This changes Rules 35, A4 and A5.

16.2 Coastal Race: the time limit for the leading boat in each class will be 5 hours. If any boat finishes within the time limit, then the time limit will be extended by 60 minutes.

## **17.0 HEARING REQUESTS**

17.1 Protests, Requests for Redress and Scoring Inquiries must be submitted online, within the protest time limit, at

[https://www.racingrulesofsailing.org/events/11936/event\\_links?name=WIORA%2520West%2520Coast%2520Championships](https://www.racingrulesofsailing.org/events/11936/event_links?name=WIORA%2520West%2520Coast%2520Championships).

The protest time limit is 60 minutes after the last boat has finished the last race of the day or the race committee signals no more racing today, whichever is later. The time will be posted on the official noticeboard.

17.2 Notices will be posted online, within 15 minutes of the protest time limit, to inform competitors of hearings in which they are parties or named as witnesses. Hearings will be held in the Race Office on the first floor of the clubhouse.

17.3 Notices of protests by the RC or Protest Committee will be posted online to inform boats under Rule 60.2 (2).

17.4 On the last day of the regatta, a request for reopening a hearing shall be delivered: -

- (a) Within the protest time limit if the party requesting reopening was informed of the decision on the previous day;
- (b) no later than 30 minutes after the party requesting reopening was informed of the decision on that day. This changes Rule 63.7.

17.5 Arbitration will be available, in accordance with Appendix T.

## **18.0 SCORING - SEE NoR 15**

## **19.0 SAFETY REGULATIONS**

19.1 All competitors shall wear adequate personal flotation device at all times when afloat, except briefly while changing or adjusting clothing or personal equipment or while below deck. Dry suits and wetsuits are not adequate personal flotation devices. This changes RRS 40.

19.2 [DP] A boat that retires from a race shall notify the Race Committee as soon as possible.

19.3 Commercial Shipping: boats shall keep well clear of commercial shipping and fishing boats.

## **20.0 SAIL NUMBERS – RUFFIAN 23 CLASS**

20.1 [DP] No boat of the Ruffian 23 class shall display the same sail number as another boat competing in its class.

20.2 [DP] When a boat of the Ruffian 23 class displays a number on a headsail or spinnaker, it shall be the same number as displayed on its mainsail.

## **21 - 24 NOT USED**

## **25.0 TRASH DISPOSAL**

25.1 Trash may be placed aboard official vessels excluding the Race Committee Vessel.

## **26.0 MOORING AND BERTHING**

26.1 Boats shall be kept upon their assigned mooring or berth.

26.2 Boats' tenders shall be kept in their allocated positions when ashore.

## **27.0 HAUL- OUT RESTRICTIONS**

27.1 Boats shall not be removed from the water between the preparatory signal for the first race and the end of the regatta. In an emergency, and only following a written request, the protest committee may waive this.

27.2 In the event of foul weather, the organising committee may direct that all boats moored be moved to another berth.

## **28.0 DIVING EQUIPMENT AND PLASTIC POOLS**

28.1 Underwater breathing apparatus and plastic pools or their equivalent shall not be used between the preparatory signal of the first race and the end of the regatta.

## **29.0 PRIZES - SEE NoR 24**

## **30.0 RISK STATEMENT**

Rule 3 of the Racing Rules of Sailing states: "The responsibility for a boat's decision to participate in a race or to continue racing is hers alone". Sailing by its nature is an unpredictable sport and therefore inherently involves an element of risk. By taking part in the event, each competitor agrees and acknowledges that:

(a) They are aware of the inherent element of risk involved in the sport and accept responsibility for the exposure of themselves, their crew and their boat to such inherent risk whilst taking part in the event

(b) They are responsible for the safety of themselves, their crew, their boat and their other property whether afloat or ashore.

(c) They accept responsibility for any injury, damage or loss to the extent caused by their own actions or omissions.

(d) Their boat is in good order, equipped to sail in the event and they are fit to participate.

(e) The provision of a race management team, patrol boats, and other officials and volunteers by the event organiser does not relieve them of their own responsibilities.

(f) The provision of patrol boat cover is limited to such assistance, particularly in extreme weather conditions, as can be practically provided in the circumstances

### **31.0 INSURANCE**

31.1 Each participating boat shall be insured with valid third-party liability insurance with a minimum cover of €3,000,000 per event or the equivalent.

### **32.0 HONORARY MEMBERSHIP**

32.1 All competitors sailing in the West Coast Championships and the Ruffian National Championships shall be honorary members of Mayo Sailing Club during the event, and will be bound by the rules of the club. Competitors are reminded that personal effects, gear, trailers and other equipment are their own responsibility and neither the West of Ireland Offshore Racing Association, the Irish Ruffian Association, the Race Committee, nor Mayo Yacht Club CLG trading as Mayo Sailing Club can be held liable for any claim, loss or damage arising out of participation in these events.

### ADDENDUM 1 - Laid Courses:

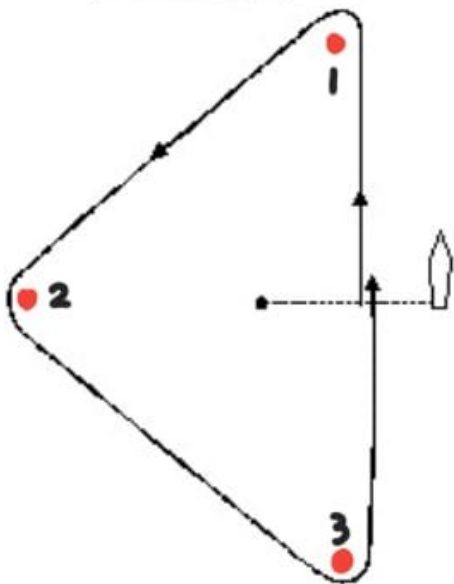
The following diagrams are indicative only and an offset mark and/or Leeward gate may be laid for W/L courses. Courses may include any combination or number of these diagrams. The start/finish line is not a gate unless so declared by the race officer.

A. Triangular course will be Start - Marks 1,2,3 x number of rounds - Finish. All marks shall be left to Port.

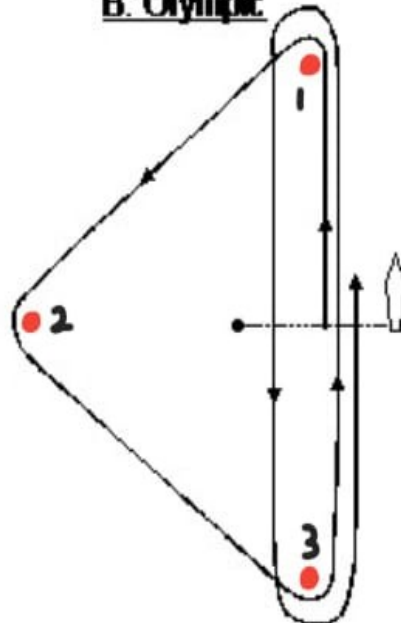
B. Olympic course will be Start - Marks 1,2,3,1,2,1,2,3 (3 rounds) or 1,2,3,1,3 (2 rounds) - Finish. All marks shall be left to Port.

C. Windward-Leeward course will be Start - Mark 1 to Port, Mark 2 to Port, Mark 3 to Starboard OR Mark 4 to Port, x number of rounds - Finish. Mark 2 may be removed without a signal. Marks 3 and 4 may be replaced by a single mark to be left to Port without a signal.

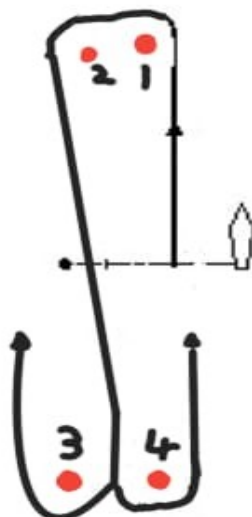
**A: Triangle**



**B: Olympic**

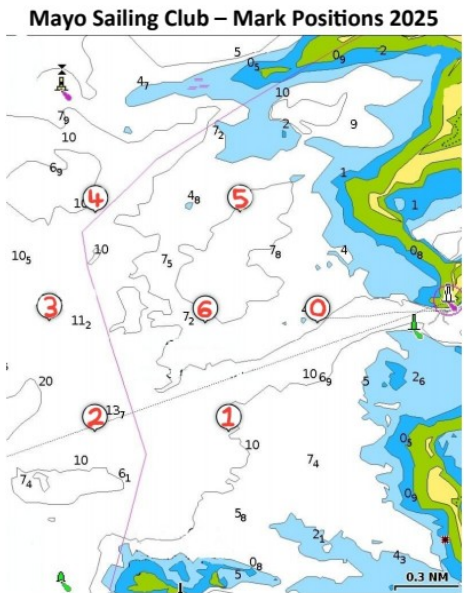


**C: Windward-leeward**



**ADDENDUM 2 - Mayo Sailing Club fixed mark locations (approximate)**

**A GPX file of these marks is available on the event Whatsapp Group.**



Mark	Latitude (DMM)	Longitude (DMM)	Latitude (DMS)	Longitude (DMS)
Mark 0	53°49.481' N	9°41.207' W	53°49'29" N	9°41'12" W
Mark 1	53°48.987' N	9°41.888' W	53°48'59" N	9°41'53" W
Mark 2	53°48.987' N	9°42.913' W	53°48'59" N	9°42'55" W
Mark 3	53°49.481' N	9°43.263' W	53°49'29" N	9°43'16" W
Mark 4	53°49.983' N	9°42.913' W	53°49'59" N	9°42'55" W
Mark 5	53°49.983' N	9°41.801' W	53°49'59" N	9°41'48" W
Mark 6	53°49.481' N	9°42.070' W	53°49'29" N	9°42'04" W