



Mayo Sailing Club

Keelboat Racing (Cruisers and Ruffian 23 Class)

Thursday Evening Series 2026

SAILING INSTRUCTIONS

1. Notices to Competitors and Changes to Sailing Instructions (SIs) ashore will be posted on the MSC “Sailing Skippers/crew” and “MSC Ruffian 23 Fleet” WhatsApp groups at any time. Changes to SIs afloat will be made verbally by VHF Channel 12.

2. The Course

2.1 Prior to the Warning Signal, courses for Cruisers and Ruffians will be posted on the MSC “Sailing Skippers/crew” and “MSC Ruffian 23 Fleet” WhatsApp groups respectively.




3. Class Flags

3.1 Cruisers: Class flag will be IC Numeral 1

3.2 Ruffians: Class flag will be IC flag Q

4. The Start

4.1 Races will be started using rule 26, with the warning signal given 5 minutes before the starting signal.

Minutes before starting signal	Visual signal	Sound signal	Indicates
5	Class Flag raised Cruisers  Ruffians 	1 Hoot	Warning Signal
4	Flag P raised 	1 Hoot	* Preparatory Signal, Racing Rules come into effect
1	Flag P lowered	1 LONG Hoot	1 Minute to Start
0	Class Flag Lowered	1 Hoot	Starting Signal

* Flag U may be used in place of Flag P, especially after a General Recall.

4.2 The starting line will be a line between a red-and-white striped pole on the race committee vessel and a starting mark displaying an orange flag.

4.3 A boat starting later than 5 minutes after her starting signal will be scored Did Not Start without a hearing. This changes rules 35, A4 and A5.

4.5 When the Race Committee determines that a boat has not complied with rule 29.1 or 30, the Race Committee may broadcast the boat's sail number on VHF channel 12, as soon as practicable after the starting signal. Failure to transmit or receive a broadcast, or errors in the broadcast, shall not be grounds for a request for redress by a boat. This changes rule 61.1(a).

4.6 Signal Flags will not be displayed when starting from a RIB.

5. The Finish

5.1 The finishing line will be between a red and white pole on the race committee vessel and a finishing mark displaying an orange flag. No pole or mast will be used or Signal Flags displayed when finishing from a RIB.

5.2 In the event that classes approach the finish line from opposite directions, Cruisers shall cross the extension of the finish line outside the finish mark, as close to the mark as is safe. The race committee will endeavour to alert boats accordingly by VHF. This changes rule 28 and *Finish*.

5.3 The race committee may deem that boats still racing have finished in their current positions. This will be advised by VHF. In the case of Cruisers, an estimated finish time will be applied. This will not be grounds for redress by a boat. This changes rules 28, 35, 61.1(a), A4, A5 and *Finish*

6. Change of Course and Shortening Course

6.1 The Race Committee may change the course, shorten the course at any mark or move the finishing line, all as provided by rules 32 and 33, except that Signal Flags will not be displayed. Such changes will be advised VHF. This changes rules 32 and 33.

7. Target Race Times and Time Limits

7.1 Target Race Times

Class	No. of Races Scheduled	Target Time for first finisher
Cruisers	1	70 to 80 mins.
	2	Sprint Race: 25 to 30 mins.
		Second Race: 40 to 50 mins.
Ruffians	1	70 to 80 mins.
	2	30 to 40 mins. for both races

Failure to meet target times will not be grounds for redress. This changes rule 61.1(a).

7.2 Time Limits

Time limits consist of two (2) parts: (i) the time for the first boat to start, sail the course and finish and (ii) for all remaining boats, a finishing window which starts when the first boat finishes. In all cases, the time limit and finishing window shall be the earlier of the time stated below and sunset at Westport.

Class	No. of Races Scheduled	Time Limit for the first boat to start, sail the course and finish	Length of finishing window
Cruisers	1	90 mins.	20 mins
	2	Sprint Race: 40 mins	10 mins.
		Second Race: 60 mins.	15 mins.
Ruffians	1	90 mins.	15 mins.
	2	45 mins.	10 mins.

7.3 Boats failing to finish within the time limit for the first boat or finishing window will be scored Did Not Finish or TLE ("Time Limit Expired") without a hearing. This changes rules 35, A4 and A5.

7.4 If no boat finishes within the time limit for the first boat, the race shall be abandoned.

8. Retirement

8.1 A boat that retires from a race shall notify the race committee as soon as possible.

9. Penalties

9.1 Rule 44.1 is changed so that the Two-Turn Penalty is replaced by the One-Turn Penalty.

10. Radio Communications

10.1 Boats are required to carry a working marine VHF, for the purposes of safety and to receive broadcasts on Channel 12 by the Race Committee. Failure to transmit or receive such broadcasts shall not be grounds for redress by a boat. This changes RRS 61.1 (a) and Ruffian 23 Class Rule 15.

11. Protests

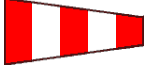






11.1 The requirement to display a red flag shall not apply. This changes rule 60.2(a)(1).

11.2 Protests shall be lodged with the Sailing Secretary or his or her deputy, no less than 90 minutes after the last boat finishes the last race of the day. This may be done verbally. This changes rule 60.3(a).

11.3 Arbitration will be offered in accordance with RRS Appendix T.

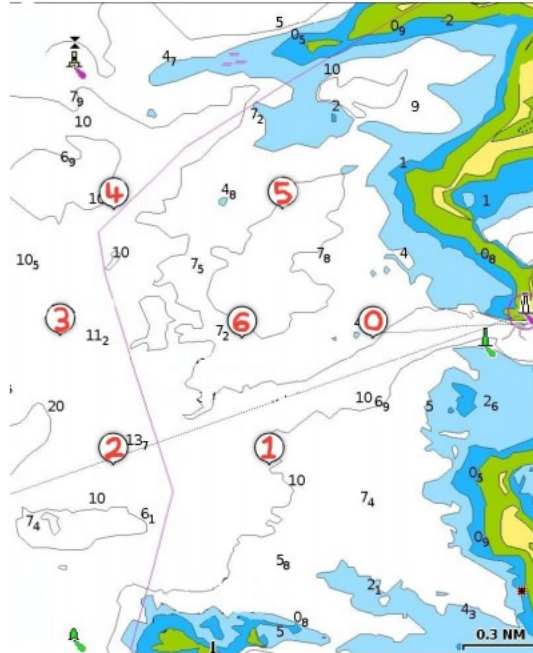
11.4 In Appendix T1(c), the phrase “a written statement” is changed to “a verbal statement”.

Addendum A - Extract from RRS Race Signals
(commonly used signal flags)
When flown under a class flag, signal applies to that class only.

Flag		Indicates: (see RRS Race Signals for full text)
AP		All races not started are postponed. The warning signal will be made 1 minute after removal unless at that time the race is postponed again or abandoned.
Flag N		All races that have started are abandoned. Return to starting area.
Flag P		Preparatory signal (no starting penalties in force)
Flag U		Preparatory signal when rule 30.3 is in effect (starting penalty is in force).
Flag X		Individual Recall (one or more boats is OCS). Lowered after 4 minutes or when all OCS boats have returned, whichever is sooner).
1 st Substitute		General Recall. The warning signal will be made 1 minute after removal.
Flag S		The course is shortened at the adjacent mark.

Addendum B – Position of Club Marks in Clew Bay 2026

Mayo Sailing Club – Bay Mark Positions 2026

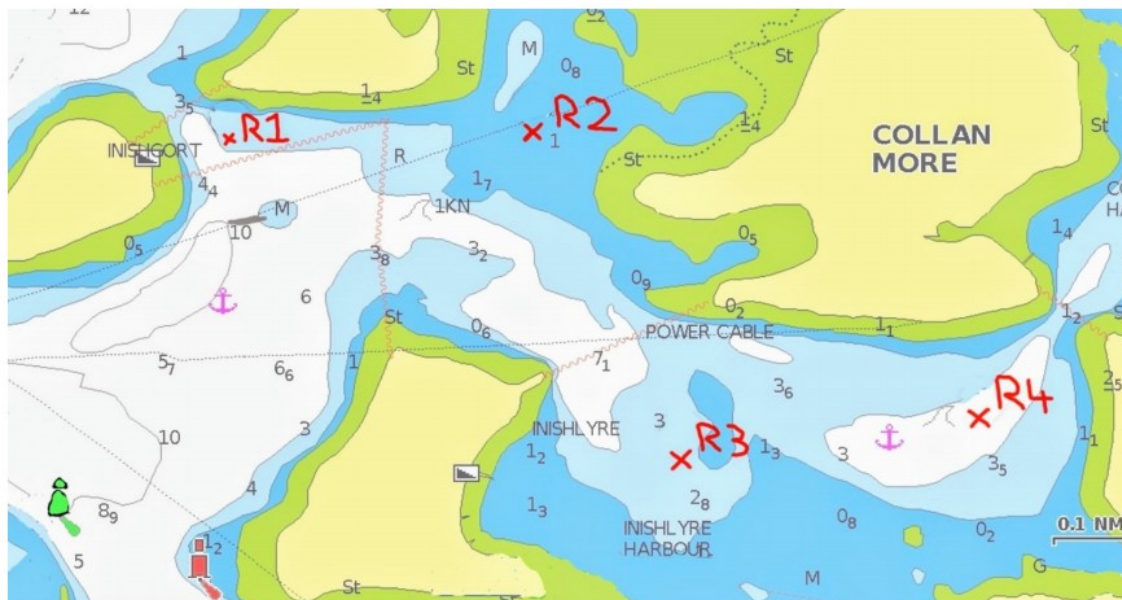


Mark	Latitude (DMM)	Longitude (DMM)	Latitude (DMS)	Longitude (DMS)
Mark 0	53°49.481' N	9°41.207' W	53°49'29" N	9°41'12" W
Mark 1	53°48.987' N	9°41.888' W	53°48'59" N	9°41'53" W
Mark 2	53°48.987' N	9°42.913' W	53°48'59" N	9°42'55" W
Mark 3	53°49.481' N	9°43.263' W	53°49'29" N	9°43'16" W
Mark 4	53°49.983' N	9°42.913' W	53°49'59" N	9°42'55" W
Mark 5	53°49.983' N	9°41.801' W	53°49'59" N	9°41'48" W
Mark 6	53°49.481' N	9°42.070' W	53°49'29" N	9°42'04" W

Positions are approximate

Addendum C – Position of Ruffian Marks 2026

Mayo Sailing Club - Ruffian Marks 2026



Mark	Latitude (DMS)	Longitude (DMS)	Mark	Latitude (DMS)	Longitude (DMS)
R1	53° 49.834' N	9° 39.527' W	R3	53° 49.429' N	9° 38.538' W
R2	53° 49.851' N	9° 38.864' W	R4	53° 49.470' N	9° 37.881' W